



COMMERCIAL USE

# THERMAL FOOD HOLDER

**JFM ①**

Model Number: JFM-390P, JFM-570P, JFM-3900, JFM-5700

Trade Name: TIGER

Responsible party: TIGER CORPORATION U.S.A.

Address: 1815 W 205th Street, Unit 106, Torrance, CA 90501

Phone: (310) 787-1985



## INSTRUCTION MANUAL

Contents:	Page
Important Safeguards .....	1
Product Features .....	2
Getting Acquainted .....	3
How to Use .....	4
Useful Hints .....	5
Care & Maintenance .....	6
Specifications .....	6

Thank you for purchasing Tiger's Thermal food holder.

- Please read this manual thoroughly for instructions and proper use.
- Keep this manual in a place where it can be reached for immediate references.

### PARTS & SERVICE SUPPORT

#### For the United States and Canada

U.S.A. 1-866-55-TIGER (84437)

Canada 1-866-9090-TCD (823)

URL: <https://usa.tiger-corporation.com/>

#### For All Other Countries

Please contact the nearest Tiger Customer Service in your area, or the dealer where the original purchase was made.



TIGER CORPORATION

Head Office:3-1 Hayami-cho, Kadoma City, Osaka 571-8571, Japan

URL: <https://www.tiger.jp/global/>

JFM\_U

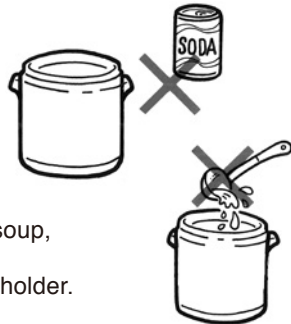
## IMPORTANT SAFEGUARDS

Please read the following safeguards before you start using this product. In order to prevent personal injuries and/or damages to the product, please understand and follow all the instructions:

■ Never store the following items:

- Dry Ice, carbonated drinks, etc.

These items may increase the internal pressure, which makes the lid hard to open or causes the contents to spew out of the holder.



- Salty items such as miso soup and other kinds of soup, Highly alkaline items such as alkali ion water. These items may damage, discolor or corrode the holder.

- Keep this product away from any heat sources such as burners and heaters. High heat may deform or discolor the resins of the holder.



- Keep this product away from the reach of children. Careless contact with this product may result in personal injuries such as burn.



- Do not sit or place heavy objects on this product. Heavy weight may damage or deform the holder.



- Close the lid securely. Loose lid may cause the contents to spill out.

- When moving this product, hold the handles tightly and lift off the surface. Do not slide the holder. Sliding may damage the holder or cause it to malfunction.



- Avoid knocking down or dropping this product; never subject it to severe impacts. The contents may spill out as a result of such incidents.

- After use, empty the holder and clean the holder interior thoroughly with sponge. Food residue may corrode the holder interior.



- Do not immerse this product in water or place it under running water. Moisture trapped in the inner parts of this product may cause rusting.

- Do not leave rice in the holder for a long period of time. It may corrode the holder.

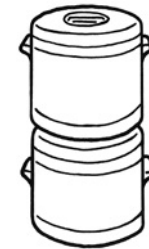
- Do not use any solvents, cleanser, bleach, wire scourer or chemically-treated cloth on this product. These substances or objects may damage the holder or cause it to rust or malfunction.



## PRODUCT FEATURES

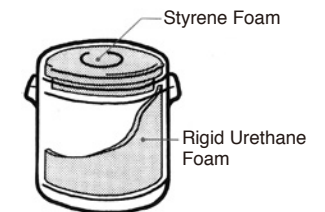
• **Stackable Design**

Thermal Food Holder's unique design allows you to stack one holder on top of another (same models). It lets you use your precious space very efficiently when you require using more than one holder.

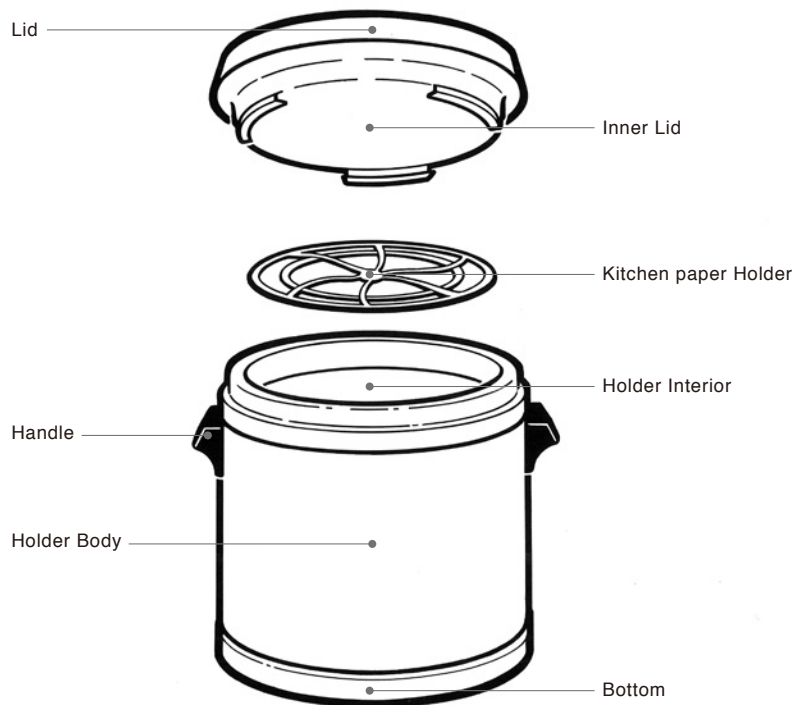


• **Excellent Thermal Insulation**

Thermal Food Holder utilizes high-performance insulating materials such as rigid urethane foam in the product structure and styrene foam in the lid. It keeps rice warm for five to six hours preserving its just-cooked freshness.



## GETTING ACQUAINTED



### Before You Use for the First Time

Before you use this product for the first time or after a long period of non-use, please clean the holder following the instructions in "Care & Maintenance" section of this manual.

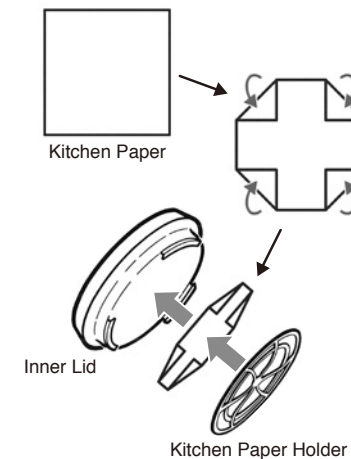
## HOW TO USE

### 1. Install commercial kitchen paper on Inner Lid.

- Without the commercial kitchen paper, excess moisture forms dew on the inner lid, which drops onto the rice every time you open the lid, making the rice stickier.

※Set the kitchen paper so that it does not protrude from the kitchen paper holder.

※Change the kitchen paper every time you use the holder.



### 2. Put freshly-cooked rice into Holder.

※Warming the holder interior before you place rice will keep the rice warmer for a longer period.

- This product is designed for plain rice. If you need to store salty or vinegared food, thoroughly clean the holder after use.
- Do not add cold rice to the warm rice in the holder or leave a rice scoop inside. It often alters the flavor of the rice inside.



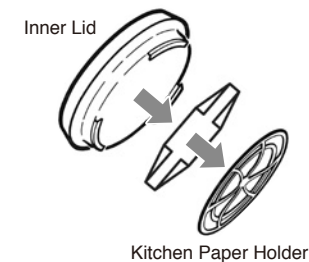
### 3. Close Lid - Keeping rice warm and fresh.

- This product will keep the rice inside warm and fresh for five to six hours. Plan to consume the rice within that time period; otherwise the rice may lose its fresh flavor.



### 4. After using the holder.

- Remove the kitchen paper. Do not reuse kitchen paper. Using the holder with soiled paper may cause generation of odors.



## USEFUL HINTS

### Store freshly-cooked rice before it gets cold.

- The secret is to store freshly-cooked rice and as much rice as possible.



### Close the lid tightly.

- Loose lid may cause the rice inside to dry, discolor and/or smell unpleasantly.
- Make sure to close the lid tightly every time. In order to preserve the heat inside, keep the lid on and closed tightly all the time except when serving the rice, which should be done quickly.



### Do-Not-Do's

- Do not add cold rice to the warm rice inside.
  - Do not leave a rice scoop inside.
- These actions may result in unpleasant smell, dryness, discoloration of the rice and/or corroding of the holder interior.

## CARE & MAINTENANCE

- Only use kitchen detergents.
- Always keep all the components of this product clean including the inner lid, kitchen paper holder and holder interior. Insufficient cleaning may result in corrosion and/or odor.



### Holder Body / Outer Lid

- Clean the outside of the holder body and outer lid with a soft cloth or sponge.



### Kitchen paper Holder

- Wash the part using a soft sponge and kitchen detergent, rinse them well. For disinfection, use suitable sanitizing agents, allow the parts to dry in a well-ventilated location.
- Do not immerse in hot water as kitchen paper holder may deform.



### Holder Interior / Inner Lid

- Clean the holder interior and inner lid with a soft cloth or sponge. For disinfection, use suitable sanitizing agents, allow the parts to dry in a well-ventilated location.
- When cleaning, do not place other objects such as dishes and utensils in the holder.
- If rust forms on the surface, remove it with soft sponge or powder cleanser.



## SPECIFICATIONS

Model	Rice Capacity (Liters - Approx.)	Holder Size (Liters)	Insulation Efficiency
3.9 L	3.9 L(137.67oz)	9.8 L(345.94oz)	Over 76°C / 168.8°F
5.7 L	5.7 L(201.21oz)	14.2 L(501.26oz)	Over 78°C / 172.4°F

- Rice Capacity: Amount of rice that can be stored in the holder for keeping warm.
- Insulation Efficiency : Water temperature measured in the following manner:
  - Room Temperature : 20°C±2°C / 68°F±4°F
  - Fill the container with boiling water.
  - When the water temperature reaches at 95°C±1°C / 203°F±2°F close the lid that is provided with the product.
  - Measure the water temperature after six hour.